

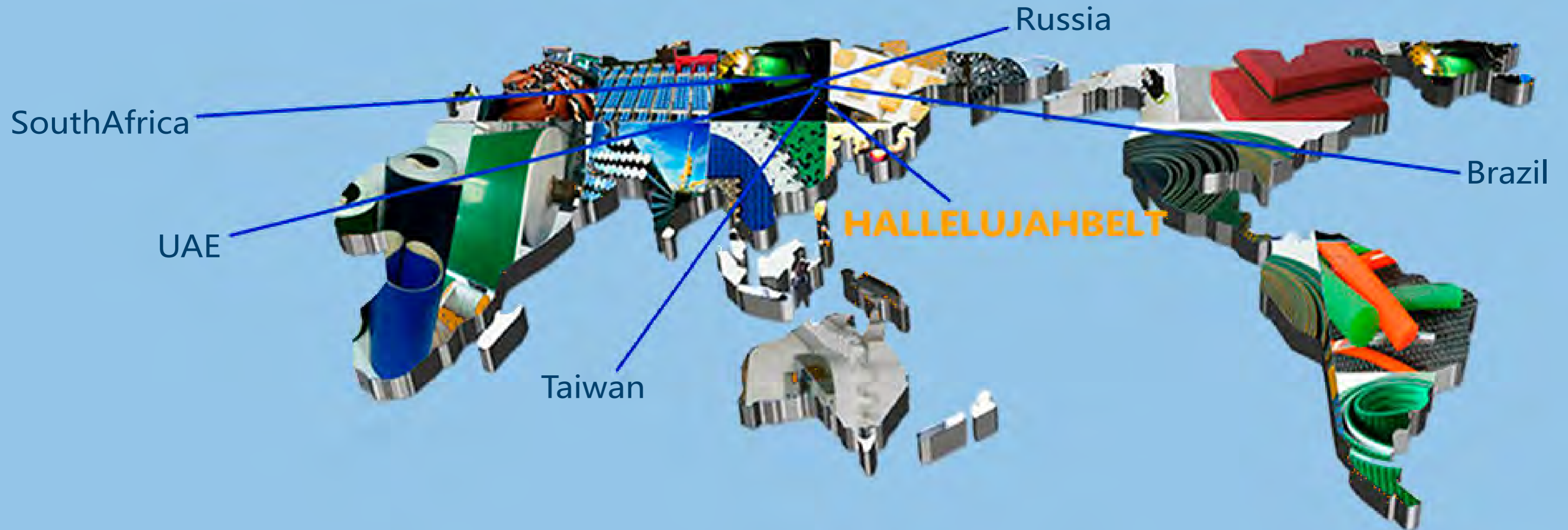
* There is color difference between object and picture.



Over 10 years Professional Industrial Belt Manufacturer

We have been creating customer-driven belting solutions for worldwide customers.

HALLELUJAHBELT GROUP CO., LTD.



Hallelujahbelt Group Co., Ltd.

Cell/Whatsapp: +86-135 1661 3385

Tel: +86-757-88742370

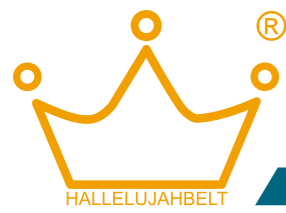
Email/Skype ID: info@hallelujahbelt.com

Website : www.hallelujahbelt.com

Address : 5th floor Huanyuan Building, chancheng District
Foshan, Guangdong, China (Mainland) 528000



BUT seek first his kingdom and his righteousness; and all these things will be given to you also. Matthew:6:33



Hallelujahbelt Group Co., Ltd.

HALLELUJAHBELT is the leading manufacturer of conveyor belt, timing belt, flat belt, bucket elevator belt, timing pulley and smart conveying solutions in the global market. **HALLELUJAHBELT** group has provided the most complete types and the highest quality level industrial belts manufactured in China for more than ten years. Currently, Hallelujahbelt has clients in more than 30 countries across of the world.

Our products range consists of Light Duty Conveyor Belt, Timing Belt, Bucket Elevator Belt, Flat Belt, V Belt, Plastic Modular Belt various kinds of belts. Our product quality matches other world famous companies at a more competitive price. and are widely used in robotics, amusement, ceramic, stone brick machine , glass, electronics, foodstuffs, drinks, textile, wood industry, logistics industries also .Our goal is unique to the industrial belt supplier in the world.

In addition to our existing products, **HALLELUJAHBELT** R&D team has outstanding product development capabilities. We not only produce high quality products according to the parameters or samples given by our customers but also can develop better more competitive products proactively.and bright future!

In future, **HALLELUJAHBELT** will continue to deepen the development of industrial belt, improve our service, cooperate with the new and old customers actively, and to achieve development jointly and bright future.

Welcome to be our SOLE Agent GOD LOVE U.

COMPANY CULTURE

- Continuous Innovation
- Customer Oriented
- Leading Technology



Hallelujahbelt HISTORY

2009

Hallelujahbelt Co., Ltd. was established in Hongkong

2012

Set up the first factory in Foshan China

2016

Set up Shenzhen company

Set up Export brand Hallelujahbelt

2010

Establishment of pvc/pu belt production sector

2014

Establishment of timing belt production sector

2017

CONTENTS

- P01 ● Factory
- P02 ● Clients
- P03 ● Technical parameter
- P07 ● Bucket Elevator Components
- P09 ● PVC & PU conveyor belt
- P11 ● PVC treadmill belt
- P12 ● Application
- P13 ● Timing belt series
- P17 ● Packaging machine belt
- P18 ● Robot Tracks belt
- P19 ● Flat belt
- P20 ● PU Round belt
- P21 ● Spepcial belt
- P22 ● Problem analysis
- P23 ● Modular belt



FACTORY



Clients

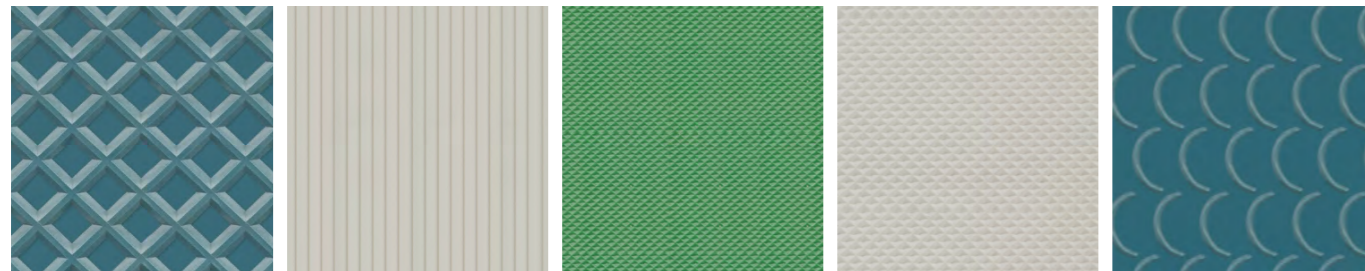
>> www.hallelujahbelt.com



Our products exported more than 30 countries across the world.
USA, India, Brazil, Russia, SA, UAE, Ukraine etc

OUR TEAM

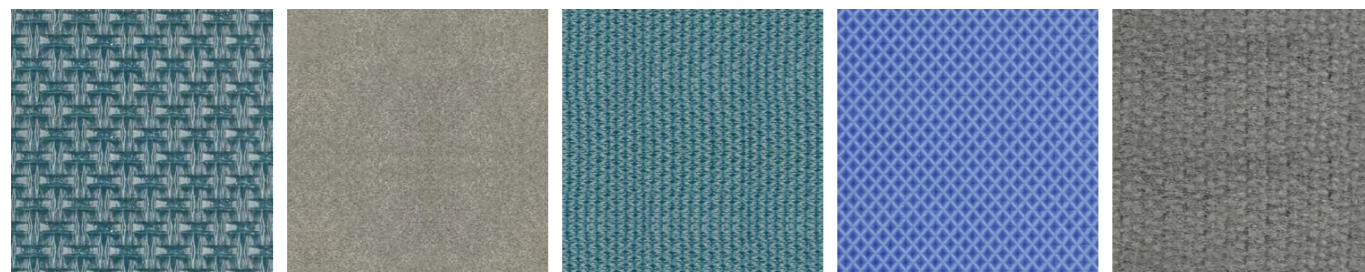
Professional sales team make the
business more easier and efficient!



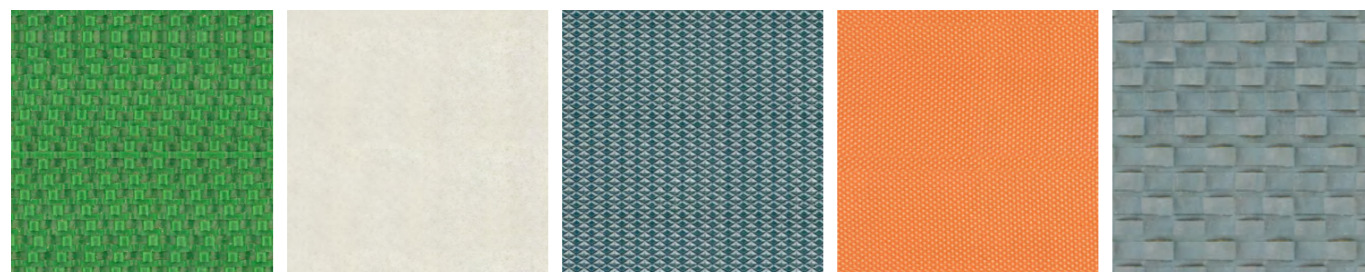
lattice pattern washboard belt diamond pattern white diamond surface crescent-shaped pattern



two sides fiber black diamond pattern herringbone pattern checkered grass belt nails belt



'I'-shaped pattern felt golf blue diamond pattern PVK belt



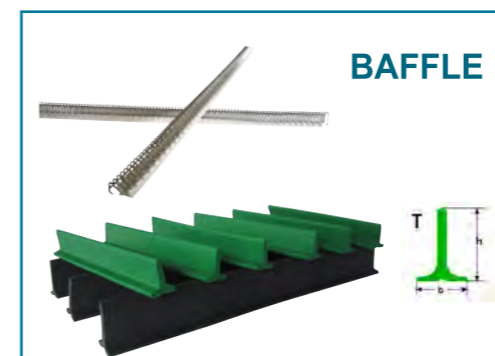
rough top white PU marble belt curtain belt sawtooth



pinstripe storiform matt line-shaped pattern convex tooth



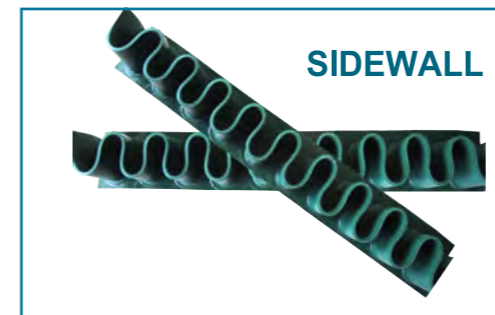
SPECIFICATION B*H (mm)	HEIGHT(mm)	THE BOTTOM WIDTH (mm)	COLOR	MATERIAL	HARDNESS	MIN.PULLEY DIA. (mm)	
						FRONT	BACK
6*4	4	6	■ ■ ■	PVC	60	40	30
8*5	5	8	■ ■ ■	PVC	60	50	40
10*6	6	10	■ ■ ■	PVC	60	70	60
13*8	8	13	■ ■ ■	PVC	60	110	80
11*17	11	17	■ ■ ■	PVC	60	180	120



ITEM NO.	HEIGHT(mm)	SPECIFICATION B*H (mm)	COLOR	MATERIAL	HARDNESS	MIN.PULLEY DIA. (mm)
T20	20	20*20	■ ■ ■	PVC	60	90
T30	30	25*30	■ ■ ■	PVC	60	120
T40	40	25*40	■ ■ ■	PVC	60	120
T50	50	25*50	■ ■ ■	PVC	60	120
T60	60	40*60	■ ■ ■	PVC	60	150
T70	70	45*75	■ ■ ■	PVC	60	160
T80	80	47*80	■ ■ ■	PVC	60	180
T90	90	50*85	■ ■ ■	PVC	60	200
T100	100	53*90	■ ■ ■	PVC	60	220

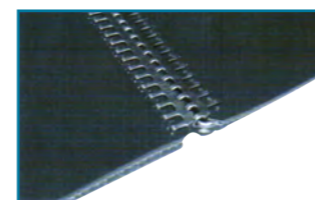


ITEM NO.	HEIGHT(mm)	SPECIFICATION B*H (mm)	COLOR	MATERIAL	HARDNESS	MIN.PULLEY DIA. (mm)
X30	30	25*30	■ ■ ■	PVC	60	40
X40	40	30*40	■ ■ ■	PVC	60	60
X50	50	30*50	■ ■ ■	PVC	60	80
X60	60	35*60	■ ■ ■	PVC	60	80
X70	70	40*70	■ ■ ■	PVC	60	100
X80	80	43*80	■ ■ ■	PVC	60	120
W35	35	28*35	■ ■ ■	PVC	60	130

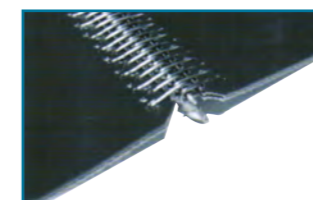


ITEM NO.	HEIGHT(mm)	SPECIFICATION B*H (mm)	COLOR	MATERIAL	HARDNESS	MIN.PULLEY DIA. (mm)
S30	30	40*45	■ ■ ■	PVC	60	60
S40	40	40*45	■ ■ ■	PVC	60	80
S50	50	40*45	■ ■ ■	PVC	60	100
S60	60	40*45	■ ■ ■	PVC	60	120
S70	70	40*45	■ ■ ■	PVC	60	140
S80	80	40*45	■ ■ ■	PVC	60	160
S90	90	50*85	■ ■ ■	PVC	60	200
S100	100	53*90	■ ■ ■	PVC	60	220

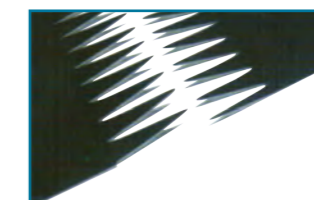
CONNECTION METHOD



steel steel buckle splice



clip splice



single splice



multiply splice



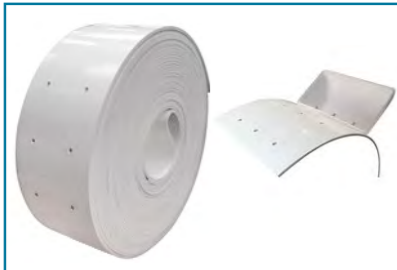
BELT CODE	Structure (plies Fabric + Glue)	THICKNESS	Hardness	MATERIAL	SURFACE		PERMISSIBLE TEMP.	WEIGHT (kg/sq. m)	TEN STRENGTH (N/mm)	Tension 1% Elongation	MIN. PULLEY DIA.	Low Noise-Antistatic	Max roll width
					TOP/BOTTOM	COLOUR							
HA10P	1+1	1.0	75	PVC	Smooth/Fabric	White/Green/Black	-10 to +80°C	1.1	≥50	≥4	20	—	4000
HA11P	1+1	1.0	75	PVC	Diamond/Fabric	White	-10 to +80°C	1.1	≥50	≥4	20	—	3000
HA1.8FC	2+1	1.8	—	PVC	Fabric/Fabric	White	-10 to +80°C	2.2	≥100	≥8	40	—	4000
HA20P	2+2	2.0	75	PVC	Smooth/Fabric	White/Green/Black/Dark green/Blue	-10 to +80 °C	2.5	≥100	≥8	40	—	4000
HA20M	2+2	2.0	75	PVC	Matt/Fabric	Black/Green	-10 to +80°C	2.5	≥100	≥8	40	—	4000
HA20AS	2+2	2.0	75	PVC	Smooth/Fabric	Green	-10to +80°C	2.5	≥100	≥8	40	AS	4000
HA20D	2+2	2.0	75	PVC	Diamond/Fabric	White/Green	-10 to +80°C	2.8	≥100	≥8	40	—	3000
HA20DS	2+3	2.0	75	PVC	Diamond/Smooth	White/Green	-10 to +80°C	2.8	≥100	≥8	40	—	3000
HA22DF	2+2	2.2	75	PVC	Diamond/Fabric	White/Green	-10 to +80°C	2.8	≥100	≥8	40	—	3000
HA30AS	2+2	3.0	75	PVC	Smooth/Fabric	Green	-10to +80°C	2.8	≥100	≥8	60	AS	4000
HA30P	2+2	3.0	75	PVC	Smooth/Fabric	White/Green/Black/Dark green/Blue	-10 to +80 °C	3.8	≥100	≥8	60	—	4000
HA30DS	2+3	3.0	75	PVC	Diamond/Smooth	White/Green	-10 to +80°C	3.8	≥120	≥8	80	—	3000
HA30L	2+2	3.0	75	PVC	Longitudinal/Fabric	Green	-10 to +80 °C	3.5	≥100	≥8	60	—	2000
HA30IS	2+2	3.0	75	PVC	I-shape/Fabric	Dark green/Black	-10 to +80 °C	2.5	≥100	≥8	40	—	2000
HA30F	2+2	3.0	75	PVC	Felt/Fabric	Black	-10 to +80 °C	3.7	≥80	≥7	20	—	2000
HA30C	3+3	3.0	75	PVC	Canvas /Canvas	Denim	-10 to +90 °C	3.7	≥180	≥8	100	—	3000
HA36K	impregnation	3.6	85	PVK	—	Black	-10 to +80 °C	4	≥220	≥23	80	—	2500
HA43K	impregnation	4.3	85	PVK	—	Black	-10 to +80 °C	4	≥260	≥25	100	—	2500
HA40P	3+3	4.0	75	PVC	Smooth/Fabric	White/Green/Black/Dark green/Blue	-10 to +80 °C	5	≥150	≥12	80	—	4000
HA40M	3+3	4.0	75	PVC	Matt/Fabric	Black/Dark green	-10 to +80 °C	4.5	≥150	≥12	80	—	4000
HA40DS	3+3	4.0	75	PVC	Diamond/Smooth	White	-10 to +80 °C	4.5	≥150	≥12	80	—	3000
HA40F	3+3	4.0	75	PVC	Felt/Fabric	Black	-10 to +80 °C	5	≥80	≥7	20	—	2000
HA50RT	2+2	5.0	75	PVC	Rough top/Fabric	Green/Dark green	-10 to +80 °C	5.3	≥100	≥6	60	—	3000
HA50P	3+3	5.0	75	PVC	Smooth/Fabric	White/Green/Black	-10 to +80 °C	6.2	≥200	≥16	120	—	4000
HA50FB	2+2	5.0	75	PVC	Fish bone/Fabric	White	-10 to +80 °C	5.5	≥100	≥12	20	—	2000
HA50DS	3+4	5.0	75	PVC	Diamond/Smooth	Green	-10 to +80 °C	6.2	≥150	≥12	100	—	3000

BELT CODE	Structure (plies Fabric + Glue)	THICKNESS	Hardness	MATERIAL	SURFACE		PERMISSIBLE TEMP.	WEIGHT (kg/sq. m)	TEN STRENGTH (N/mm)	Tension 1% Elongation	MIN. PULLEY DIA.	Low Noise-Antistatic	Max roll width
					TOP/BOTTOM	COLOUR							
HA60P	3+3/4+4	6.0	75	PVC	Smooth/Fabric	White/Green/Black	-10 to +80 °C	6.7	≥200	≥16	150	—	3000
HA60RT	2+2	6.0	75	PVC	Rough top/Fabric	Dark green	-10 to +80 °C	6	≥100	≥8	60	—	3000
HA60LS	3+3	6.0	75	PVC	Lattice/Fabric	Dark green	-10 to +80 °C	7.6	≥680	≥30	150	—	3000
HA70P	3+3	7.0	75	PVC	Smooth/Fabric	Dark green	-10 to +80 °C	7.6	≥680	≥30	150	—	3000
HA80P	3+3/4+4	8.0	75	PVC	Smooth/Fabric	green	-10 to +80 °C	8.6	≥200	≥16	80	—	3000
HA80PP	4+5	8.0	75	PVC	PVC/PVC	green	-10 to +80 °C	8.6	≥200	≥16	80	—	3000
HA90PO	4+4	9.0	75	PVC	Lattice/Fabric	Dark green	-10 to +80 °C	10	≥800	≥45	150	—	2500
HA90ST	2+2	9.0	75	PVC	Sawteeth/Fabric	Dark Green	-10 to +80 °C	6.5	≥400	≥22	100	—	3000
HA90	4+4	9.0	75	PVC	Smooth/Fabric	Dark green	-10 to +80 °C	10	≥800	≥45	150	—	2500
HA90LA	3+3	9.0	75	PVC	Lattice/Fabric	Black	-10 to +80 °C	7.6	≥150	≥4	60	—	2000
HA90LS	3+3	9.0	75	PVC	line-shape/Fabric	Black	-10 to +80 °C	8.5	≥200	≥16	100	—	2000
HA135ST	4+4	13.5	85	PVC	Sawteeth/Fabric	Green	-10 to +80 °C	11	≥800	≥45	200	—	2500
HA135BS	4+4	13.5	85	PVC	Sawteeth/Fabric	Green	-10 to +80 °C	11	≥800	≥45	200	—	2500
HA10PU	1+1	1.0	90	PU	Smooth/Fabric	White/Green/Blue	-10 to +80 °C	1.2	≥50	≥4	10	—	4000
HA08PU	1+1	1.0	90	PU	Smooth/Fabric	White/Green/Blue	-10 to +80 °C	1	≥100	≥8	10	—	4000
HA14PU	2+2	1.4	90	PU	Smooth/Fabric	White/Blue	-10 to +80 °C	1	≥100	≥8	20	—	4000
HA15PU	2+2	1.5	90	PU	Smooth/Fabric	White/Blue	-10 to +80 °C	1.8	≥100	≥8	30	—	4000
HA20PU	2+2	2.0	90	PU	Smooth/Fabric	White/Blue/Green	-10 to +80 °C	2.5	≥100	≥8	30	—	4000
HA35PU	3+3	3.5	90	PU	Smooth/Fabric	Black/Green	-10 to +80 °C	4	≥200	≥15	60	—	3000
HA40PU	3+3	4.0	90	PU	Smooth/Fabric	White	-10 to +80 °C	4.5	≥140	≥10	100	—	2000
Treadmill belt	2+2	2.6	75	PVC	Golf/Fabric	Black	-10 to +80 °C	1.8	≥140	≥10	100	—	2000
HA20SL	2+2	2.0	75	Silicon	Smooth/Fabric	White	-60 to +200 °C	2.2	≥100	≥8	40	—	2000
HA30SL	3+3	3.0	75	Silicon	Smooth/Fabric	White	-60 to +200 °C	2.8	≥160	≥12	60	—	2000
HA40SL	4+4	4.0	75	Silicon	Smooth/Fabric	White	-60 to +200 °C	4.3	≥200	≥16	80	—	2000
HA50SL	5+5	5.0	75	Silicon	Smooth/Fabric	White	-60 to +200 °C	5.5	≥240	≥20	120	—	2000

MARKS: ALL BELT CAN BE CUSTOMISED

P: PVC AS : Antistatic SI: Silicon LA: Lattice LS:line-shape ST:sawteeth BS: Bidirectional sawteeth PO: Polishing PP: PVC/PVC DS:Diamond/smooth F:Felt K: PVK RT: Rough Top IS:I-shape C: Canvas FB:fish bone FC:Fabric L:Longitudinal M:Matt

Elevator belts



- ◆PVC elevator belts are anti-static and imputrescible. This belt is fully synthetic and suitable for the food industry.
- ◆These belts are available in different kinds of breaking loads and thicknesses.
- ◆PVC (PolyVinylChloride) elevator belts are oil and fat resistant and suitable for the food industry.
- ◆Belts are cut and punched according to customers specifications

BELT CODE	HARDNESS	COLOUR	MATERIAL	SURFACE (TOP BOTTOM)	THICKNESS	WEIGHT (kg/sqm)	TEN STRENGTH (N/mm)	Tension 1% Elongation	MIN PULLEY DIA	PERMISSIBLE (TEMP)
HA50E	75	White/green/Black	PVC	Smooth/Fabric	5	6.1	650	30	120	-10 to +80°C
HA70E	75	White/green/Black	PVC	Smooth/Diamond	7	7.2	1000	40	250	-10 to +80°C
Customize	Available									

Bucket bolts



Elevator bucket bolts in accordance with DIN 15237 are hot pressed and available in M7, M8, M10, and M12, zinc plated or in stainless steel.



Synonyms: elevator bolts, DIN15237, DIN 15237, head bolts, bucket fasteners.

Bucket bolts in accordance with DIN 15237 (in mm)

Bolt diameter	Length	Head diameter
M 7	20 - 25 - 30 - 35	24
M 8	20 - 25 - 30 - 35 - 40 - 45 - 50 - 60 - 70	28
M 10	25 - 30 - 35 - 40 - 45 - 50 - 55 - 60 - 70	35
M 12	25 - 30 - 35 - 40 - 45 - 50 - 55 - 60 - 65 - 70	42

Small head bucket bolts are available in M6, M7, and M8, zinc plated or in stainless steel

Bucket bolts (small head, in mm)

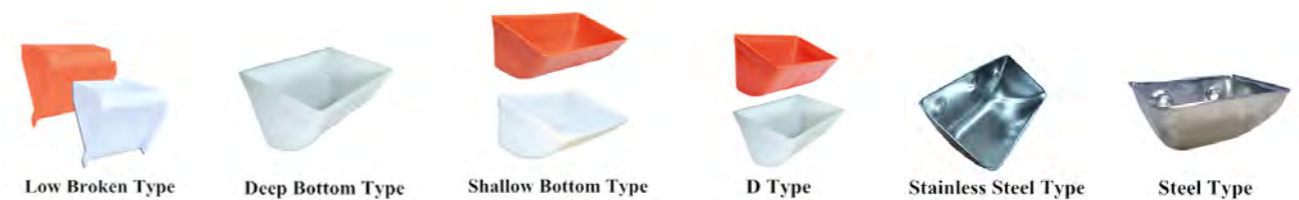
Bolt diameter	Length	Head diameter
M 6	15 - 20 - 25 - 30	18
M 7	15 - 17 - 20 - 25 - 30 - 35	21
M 8	20 - 25 - 30 - 35	24

Besides, both versions are available with standard nuts, (nyloc) locknuts, flat or domed washers, and an Allen key head variety



Over 12 different elevator bucket styles are available for agricultural and industrial applications.

Type	specification	Using Recommendations	
		Minimum bucket spacing	Hoist speed(m/s)
Deep Type	DS0705-DS6626	bucket width B +25mm.	≤2.5
Shallow Type	DQ1009-DQ5626	bucket width B +25mm.	≤3.5
No Bottom Type	DW0706-DW1812	bucket height C +1mm in the same group, and between the groups, it should be widthB-heightC+25mm	≤3.5
Separator Type	DG1107-DG1812	bucket width B +50mm.	≤3.5
Low breakage Type	DM1010-DM2921	bucket height C +2mm	0.5-0.8
Drying Type	DH1106-DH2512	bucket width B +50mm.	≤3.5
European type	4X3-15X8	bucket width B.	≤3.3
D Type	D4X3-D20X8	bucket width B +25mm.	≤2.5
S Type	S2314-S3216	bucket width B.	≤3.5
Material		HDPE/Nylon/steel/PU etc.	
Color		White/Green/Blue etc	
Feature		1.High impact and abrasion resistant 2.Thicker walls, heavy front lip for digging 3.More capacity, Cleaner discharge 4.Non-corrosive, non-sparking	
Customize		Available	





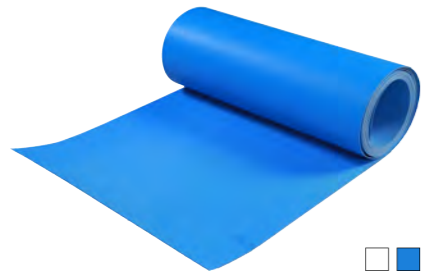
food grade two sides fiber PU



food grade PU conveyor belt



food grade sidewall conveyor belt



food grade PU conveyor belt



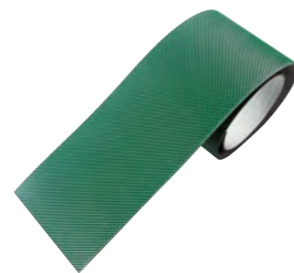
food grade diamond pattern PU conveyor belt



food grade two sides fiber PVC



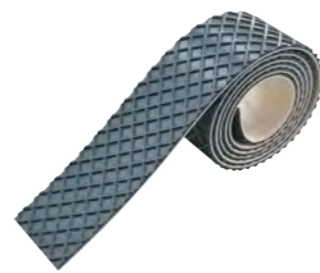
Stripe PVC conveyor belt



Dimond pattern PVC conveyor belt



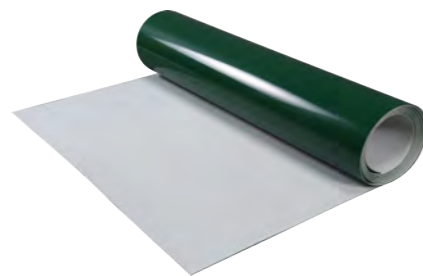
Rough top pvc conveyor belt



Wooding machine belts



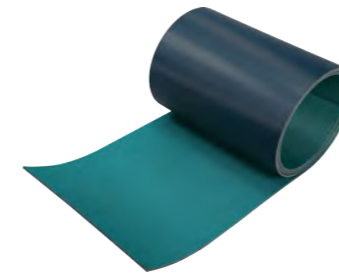
Sidewall conveyor belt with baffle



Green pvc conveyor belt



Green pvc conveyor belt with guide bar

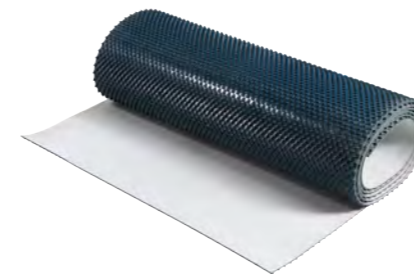


9.0 polishing belt

Reinforcing fiber at the bottom, which is of impact resistance and strong abrasion. High tensile strength. Long service life. Meet great demand in transport, polish and etc, for the stone.

Temperature (°C)	Weight (kg/m ²)	Tenstrength (N/mm)	Tension 1% elongation	Min. Pulley dia
-20 to +90	7.6	220	≥10	320

* It can be customized according to customer's demand



Sawtooth conveyor belt

The surface pattern on the sawtooth conveyor belt is triangular, naming as inverted triangle, which is used in stone machine. Thickness: 8.5mm and 13.5mm ridge orientation: same teeth, spur teeth and inverse teeth;

Total thickness (mm)	Tooth thickness (mm)	Thickness [without tooth (mm)]
8.5	5.5	3.0
13.5	5.5	8.0

* It can be customized according to customer's demand



Black PVC checkout belt

Black PVC Thickness 2.0/3.0mm Checkout Counter Conveyor Belt for Supermarket and check-in

Belt Code	Hardness	Thickness	Weight (kg/m ²)	Tenstrength (N/mm)	Tension 1% Elongation	Min. Pulley Dia.	Temperature (°C)
HA20M	75	2	2.5	100	8	40	-10 to +80°C
HA30M	75	3	3.8	120	10	60	-10 to +80°C

* It can be customized according to customer's demand



PVK conveyor belt

PVK conveyor belt mostly use karabiners to connect the belt, which is easy for people to install. Thickness: 3.6mm and 4.3mm

Product name	Operating Temperature (°C)	Weight (kg/m ²)	strength of extension	Tension 1% Elongation	Min. Pulley Dia.	Hardness
3.6 PVK	-10 to +80	4	≥220	≥23	80	85
4.3 PVK	-10 to +80	4.2	≥260	≥25	100	85

* It can be customized according to customer's demand



elevating conveyor belt

Conveyor belt is made of PVC, PU and etc as the baseband. And its baffle and sidewall are made by advanced high frequency welding. Baseband and baffle are tightly adhesive through the mould and the equipment of high temperature hot melt, which is not easy to slide.

thickness for the belt (mm)	height of baffle (mm)
2.0-7.0	10-100

* It can be customized according to customer's demand



Diamond

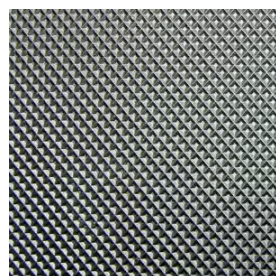


Golf

- Home use treadmill belt. thickness usually is 1.2mm, 1.4mm 1.5mm, 1.8mm
- Professional treadmill belt. thickness usually is 1.8mm 2.3mm. 2.5mm and 3.0mm



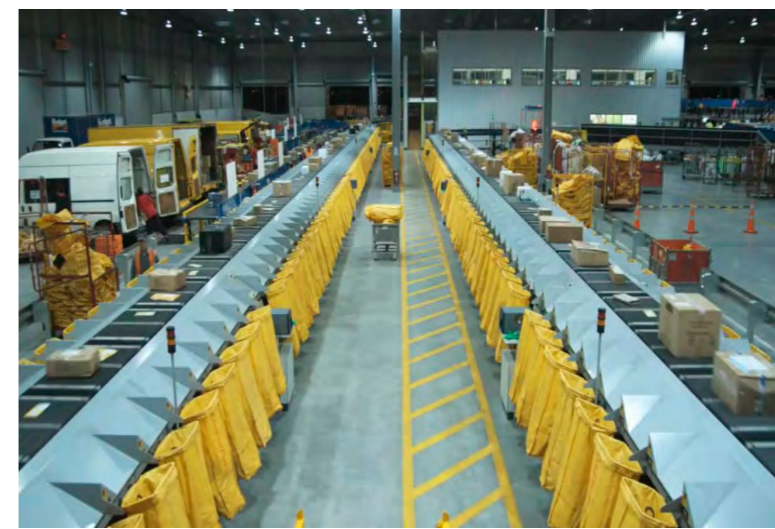
Golf pattern



Diamond

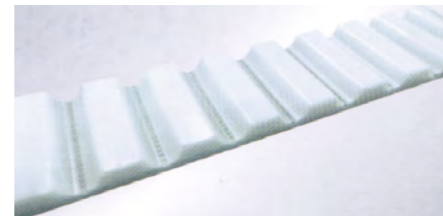
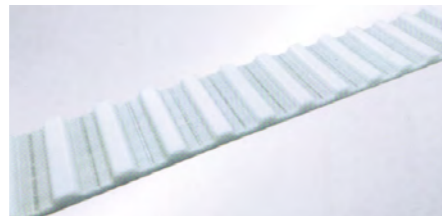
Item	HALLELUJAHBELT customized size FITNESS/WALKING/TREADMILL BELT		
Thickness	1.2mm-3.0mm	Material	PVC/TPU
Colors	Black / According to the customers' requirements		
Pattern	grass/golf/diamond etc		
Features	1.Unique maintenance free solution 2.Noise and vibration reduction 3.Long belt life 4.Durable surface with optimized pattern 5.Perfect joining technique 6.High quality hallelujahbelt		
Application	Fitness industries	MOQ	1 square meters
Unit Price	Depends on the material and detailed design		
Payment	T/T/L/C/Western Union/paypal/visa/master/e-checking etc		
Delivery time	within 7 days after your confirm order		
Shipment	Express/ air/ sea	Packing	Standard export.
Sample	Free	Customize	Available

HALLELUJAHBELT
 LEADING INDUSTRIAL
 BELTS MANUFACTURER

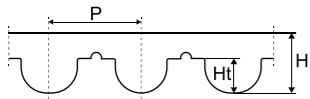


PERFECT
 UNIQUE BELTING
 SOLUTIONS SUPPLIER



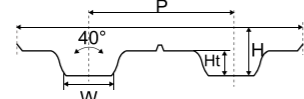


HTD3M HTD5M HTD8M HTD14M



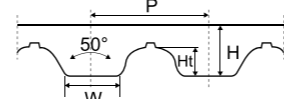
Type	P	H	Ht
HTD3M	3	2.2	1.3
HTD5M	5	3.7	2.2
HTD8M	8	5.6	3.6
HTD14M	14	10	6.43

H XH L XL



Type	P	H	Ht	W
H	12.7	4.3	2.29	4.4
XH	22.225	11.2	6.35	7.94
L	9.525	3.6	1.9	3.2
XH	5.08	2.3	1.27	1.37

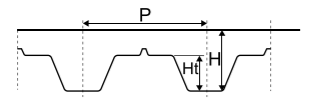
AT5 AT10 AT20



Type	P	H	Ht	W
AT5	5	2.7	1.2	2.5
AT10	10	5	2.5	5
AT20	20	8	5	10

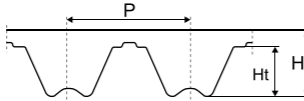


T5 T10 T20



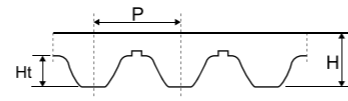
Type	P	H	Ht
T5	5	2.2	1.2
T10	10	4.5	2.5
T20	20	8	5

RPP5M RPP8M RPP14M

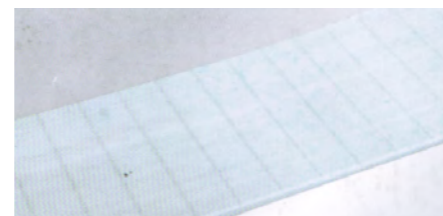
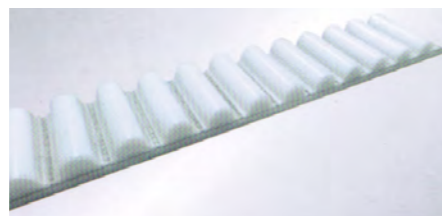


Type	P	H	Ht
RPP5M	5	3.8	2
RPP8M	8	5.4	3.2
RPP14M	14	10	6

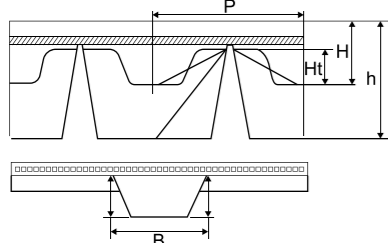
STD5M STD8M STD20M



Type	P	H	Ht
STD5M	5	3.4	1.91
STD8M	8	5.4	3.05
STD20M	20	13.2	8.4

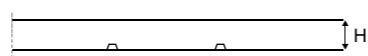


TG5 TG10 TG20 ATG10 ATG20 HG



Type	P	H	Ht	B	H
TG5	5	2.2	1.2	5	4
TG10K6	10	4.5	2.5	6	4
TG10K13	10	4.5	2.5	6	6.5
TG20	20	8	5	13	6.5
ATG10	10	4.5	2.5	13	6.5
ATG30	20	8	5	13	6.5
NGH13	12.7	4.3	2.29	13	6.5

P1 P2 P3 P4



Type	H
P1	1
P2	2
P3	3
P4	4

Timing belt series

Main product we sell now is :AT5, AT10, ATK10, T5, TT5, T10, XH, XXH, H, L, XL, 3M, 5M, 8, S5M, S14M, AT20, T20, 14M, 20M, AT5, P3, P2, P4, RPP5M, RPP8M, RPP14M, BAT10, TG10, ATG10 Open ended belt and Seamless timing belt.

Technical Parameter

Model (mm)	AT5	AT10	AT15	AT20	T5	T10	T20
Rated load of opening belts (N)	3410	7760	7240	7255	1764	4980	7250
Maximum load of thermoweld belts (N)	1705	3880	3610	3630	882	2490	3625
Breaking load of opening belts (N)	12390	32440	30220	30260	7230	18760	30250
Wetight(kg/mm)	0.16	0.30	0.34	0.38	0.104	0.22	0.37

Parameters :

Steel wire core polyurethane synchronous belt with nominal pitch of 5 mm,15mm and 20mm are equipped with shaped teeth. In accordance with DIN 7721 standard, It's most applicable to high flexible drive application cases. It's widely used in transportation transmission, liner drive and small power transmission .AT15, AT20 and T20 are used in large power transmission.

Tolerance :

Tolerance of width: ±0.5mm
Tolerance of length: ±0.5mm
Tolerance of thickness: ±0.2mm

Model (mm)	HTD3M	HTD5M	HTD8M	HTD14M	STD5M	STD8M
Rated load of opening belts (N)	1560	4960	7210	12730	4960	7210
Maximum load of thermoweld belts (N)	780	2480	3605	6365	2480	3605
Breaking load of opening belts (N)	6500	18700	31100	48870	18700	31100
Wetight(kg/mm)	0.10	0.23	0.36	0.58	0.23	0.36

Parameters :

Steel wire core polyurethane synchronous belt whose nominal pitches are 3mm,5mm,8mm and 4mm are equipped with arch shaped teeth. With characteristics of high transmitted torque, transmission accuracy, It's widely used in linear positioning. Among them, Steel wire core polyurethane synchronous belt with nominal pitch of 3mm,5mm are used in small power transmission; Steel wire core polyurethane synchronous belt with nominal pitch of 8mm is used in medium power transmission and Steel wire core polyurethane synchronous belt with nominal pitch of 14mm is used in large power transmission.

Tolerance :

Tolerance of width: ±0.5mm
Tolerance of length: ±0.5mm
Tolerance of thickness: ±0.2mm

Model (mm)	L	XL	H	XH
Rated load of opening belts (N)	3410	1480	5120	7180
Maximum load of thermoweld belts (N)	1705	740	2560	3590
Breaking load of opening belts (N)	11700	6160	18790	29890
Wetight(kg/mm)	0.195	0.122	0.21	0.55

Parameters :

Steel wire core polyurethane synchronous belt whose nominal pitches are XL(5.08mm), L(9.525mm), H(12.7mm) and XH(22.225mm) are equipped with Trapezoidal-shaped teeth, In accordance with DIN/SIO.5296 standard, it can be used together with small diameter and it is widely used in occasion using imperial standard pitch.

Tolerance :

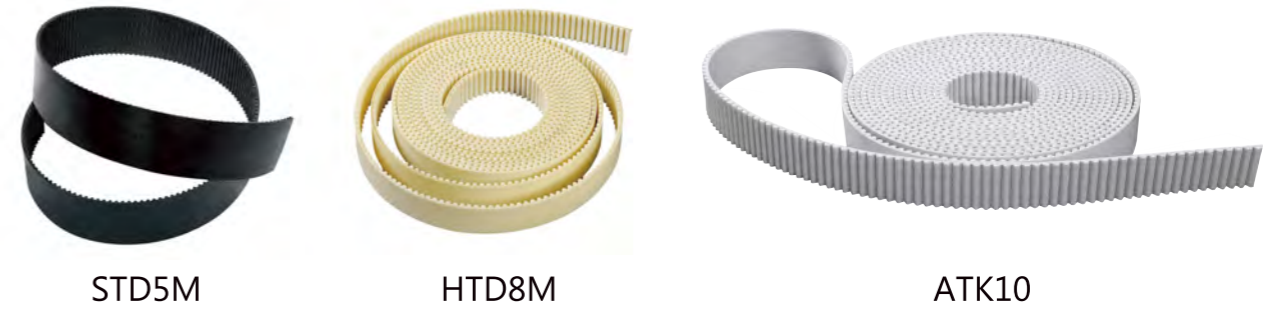
Tolerance of width: ±0.5mm
Tolerance of length: ±0.5mm
Tolerance of thickness: ±0.2mm

BELT INTERFACRE



Type & Size	As the demands of customers		
Color	White/black/green/ blue	Cords	Steel wire/ Kevlar/Nylon
Material	PU/Rubber/Steel reinforced /Fabric etc.		
Processing	punch/slot/pattern/block/guide bar/profile		
Mechanical properties	1.Dimensional stability-pre-tension low -low noise 2.Highly resistant to wear- no maintenance- good elasticity 3.Linear speeds up to 80m/s		
Chemical properties	1.Aging proof, waterproof, prevent UVA, Ozone-resistant, 2.Operating temperature: 30°C to + 80°C + 110°C short period of time can withstand the highest 3.Highly resistant to oil, oil ester 4.Acid and alkali corrosion resistance		
Coating	PU timing belts can be manufactured with special coatings, in order to fit many applications with different requirements such as, red rubber, Linatex, APL, PU .etc		
Application	Stone/ceramic/glass/electronics/aluminum/tobacco/textile/logistics/printing/ packaging/paper products processing industries etc		
Unit Price	Depends on the material and detailed design		
Payment	T/T L/C Western Union/paypal etc	Connection	Open/jointed/endless
Delivery time	within 7 days after your confirm order	MOQ	1 pc
Shipment	Express/ air/ sea	Packing	Standard export.
Sample	Free	Customize	Available

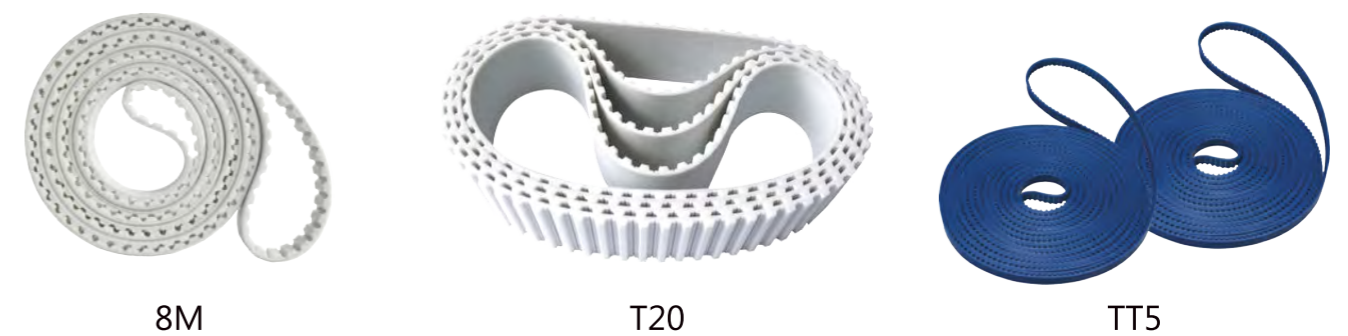
Opened timing belt



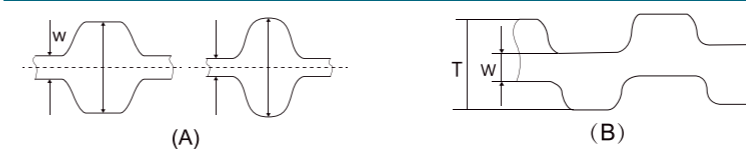
Flex Endless timing belt



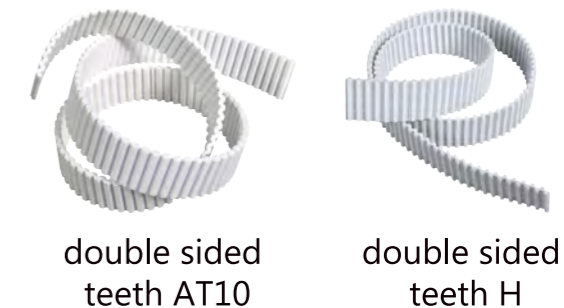
The Jointed Timing Belt



Double sided toothed timing belt



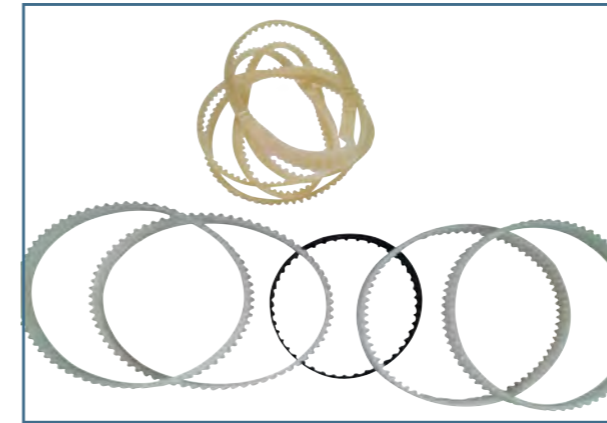
1, The double-sided pitch synchronous belt and tooth profile equivalent to a single tooth and tooth belt pitch.
2, Double teeth with tooth by the synchronous belt arrangement standards can be divided into two types;
3, DA-duplex synchronous belt tooth, a tooth with its two symmetrical arrangement, see Figure(a), DB-duplex synchronous belt gear, with its two locations with staggered teeth were, see Figure(b)





Transmission Belts: You Can Buy Various High Quality packaging machine timing belt from China Manufacturer.

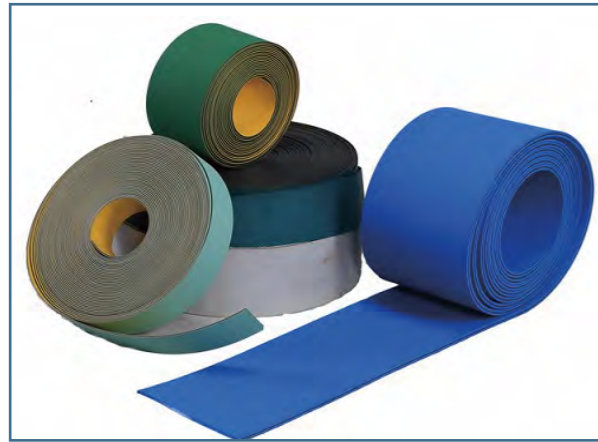
HALLELUJAHBELT company, and we are the best timing belt Supplier and Rubber/PU timing belt Manufacturer in China also.



HALLELUJAHBELT company, and we are the best timing belt Supplier and Rubber/PU robot tracks belt Manufacturer in China.

Type & Size	T10, 225L, 240L, 240H as per customer requirement		
Material	Rubber	Cords	Kevlar/Nylon
Color	black	Processing	punch/slot
width	20mm, 25mm, 30mm as per customer requirement		
Mechanical properties	1.Dimensional stability-pre-tension low -low noise 2.Highly resistant to wear- no maintenance- good elasticity 3.Linear speeds up to 80m/s		
Chemical properties	1.Aging proof, waterproof, prevent UVA, Ozone-resistant. 2.Operating temperature: 30°C to + 80°C + 110°C short period of time can withstand the highest. 3.Highly resistant to oil, oil ester. 4.Acid and alkali corrosion resistance		
Coating	rubber timing belts can be manufactured with special coatings, in order to fit many applications with different requirements such as, red/gummy/green rubber etc		
Application	Packaging processing industry		
Unit Price	Depends on the material and detailed design		
Payment	T/T L/C Western Union/paypal etc		
Delivery time	within 7 days after your confirm order		
Connection	endless	MOQ	1 pc
Shipment	Express/ air/ sea	Packing	Standard export.
Sample	Free	Customize	Available

Type & Size	As the demands of customers PU/RUBBER Robot Tracks Belt		
Cords	Steel wire/ Kevlar/Nylon	Color	White/black/green/ blue
Material	PU/Rubber/Steel reinforced /Fabric etc.	Processing	punch/slot/pattern/block/guide bar/profile
Mechanical properties	1.Less damage to the ground surface 2.Low noise 3.High running speed 4.Less vibration; 5.Low ground contact specific pressure 6.High tractive force 7.Light weight		
Chemical properties	1.Aging proof, waterproof, prevent UVA, Ozone-resistant, 2.Operating temperature: +30°C to + 80°C + 110°C short period of time can withstand the highest 3.Highly resistant to oil, oil ester 4.Acid and alkali corrosion resistance		
Connection	Open/jointed/endless		
Application	Robotics, mini-excavator, bulldozer, dumper, crawler loader, crawler crane, carrier vehicle, agriculture machinery, paver and other special machine etc		
Unit Price	Depends on the material and detailed design	Payment	T/T L/C Western Union/paypal etc
Delivery time	within 7 days after your confirm order	MOQ	1 pc
Shipment	Express/ air/ sea	Packing	Standard export.
Sample	Free	Customize	Available



- Good elasticity, anti-impact
- High adhesion, good flexing capacity
- Stable transmission
- Good antistatic performance
- Good resistance to moisture and heat, corrosion resistant
- Good wear ability and long service life



- High flexibility and impact resistance
- Round belt is easily welded by heater
- Outstanding tensile and tear strength
- Resistance to oils, fuels and oxygen
- Good weather ability

We have a complete range of polyurethane round belts for conveying and power transmission applications. PU round belts, extruded in open lengths, are homogeneous round profiles that can be welded for use as high-quality power transmission and conveying elements.

Type	Thickness (mm)	Color	Description	temperature resistance (°C)	Min. Wheel diameter(mm)	Pulling force to extend 1%(N/mm)	friction factor with the steel wheel surface	Weight(kg/m)
F01	1	Green/Yellow	Double sides coarse texture	-20-90	15	3	0.7	1.3
F-15GY05	1.5	Green/Yellow		-20-90	30	5	0.7	1.6
F-20GY08	2	Green/Yellow		-20-90	35	8.5	0.7	2.2
F-30GY10	3	Green/Yellow		-20-90	50	12	0.7	3.1
F-40GY15	4	Green/Yellow		-20-90	60	14.5	0.7	4.2
F-50GY12	5	Green/Yellow		-20-90	75	16	0.7	6
F-15PGY05	1.5	Light Green/Yellow		-20-90	30	5	0.7	1.7
F-15PGG05	1.5	Green / Light Green		-20-90	30	6	0.7	1.8
F-23PGG06	2.3	Green / Light Green		-20-90	40	10	0.7	2.6
F-E18LB08	1.8	Blue/Black		One side microgroove another side coarse texture	-20-90	35	6	0.7
F-E25LB09	2.5	Blue/Black	-20-90		45	11	0.7	2.8
F-S25LR12	2.5	Blue/Grey	-20-90		45	13	0.35	1
F-X10GB03	1	Green/Black	Double sides coarse texture	-20-90	15	5	0.4	1.1
FS-N40	4	Grey /Green	One side cowhide another side green glue	-20-90	60	13	0.7	3.9
FS-NN40	4	Grey /Grey	Double sides cowhide	-20-90	60	13	0.6	3.9
FS-10LL06	4	Blue/Blue	Double sides coarse texture	-20-90	60	13	0.7	4.5
FS-60LL10	6	Blue/Blue		-20-90	70	15	0.7	6.5

Model No.	Diameter (mm)	Packing m/roll	Hardness Shore A	Reinforced	Profile	Color
HA1	1.2	400	85A-90A	N/A	Smooth surface	Orange Green Red
HA2	2	400	85A-90A	N/A		
HA3	2.5	400	85A-90A	N/A		
HA4	3	400	85A-90A	N/A		
HA5	3.5	400	85A-90A	N/A		
HA6	4	200	85A-90A	N/A		
HA7	4.5	200	85A-90A	N/A		
HA8	5	200	85A-90A	Polyester		
HA9	5.5	200	85A-90A	Polyester		
HA10	6	200	85A-90A	Polyester		
HA11	6.5	200	85A-90A	Polyester	Rough Surface	
HA12	7	100	85A-90A	Polyester		
HA13	8	100	85A-90A	Polyester		
HA14	8.5	100	85A-90A	Polyester		
HA15	9	100	85A-90A	Polyester		
HA16	10	50	85A-90A	Polyester		
HA17	12	30	85A-90A	Polyester		
HA18	15	30	85A-90A	Polyester		
HA19	18	30	85A-90A	Polyester		
HA20	20	30	85A-90A	Polyester		
HA21	25	30	85A-90A	Polyester		
HA22	30	30	85A-90A	Polyester		



ATK10+3T



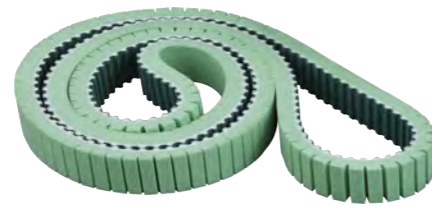
50AT10+2PU



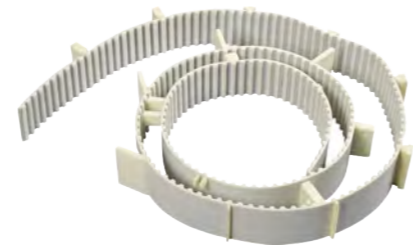
Seamless T10+T type baffle



Endless belt T10+NFT



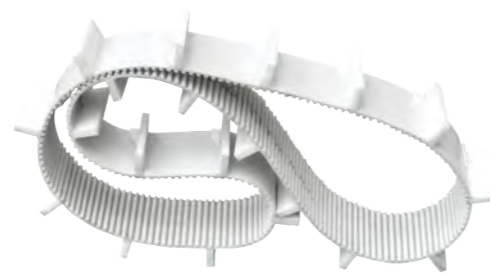
Folder bottle machine belt



T10 with baffle



H+pattern



Conveyor belt with T type baffle



Sausage timing belt



50AT10+2PU

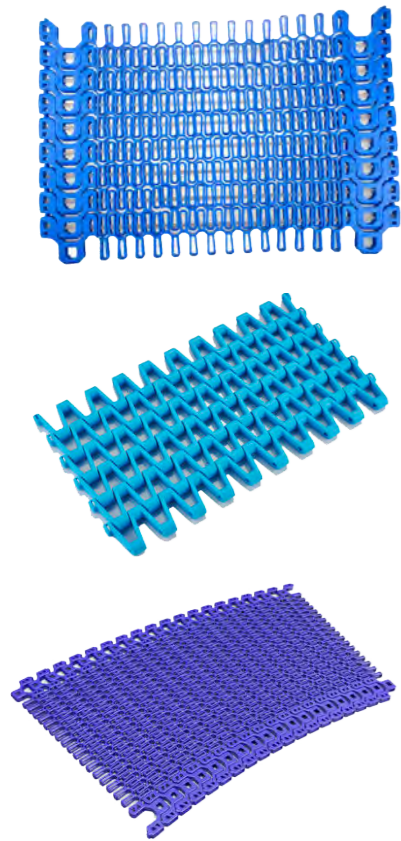


Timing belt with punch



10MM T5

Disable modes	Causes	Correctevc actions
Belt is broken	<ol style="list-style-type: none"> 1. Overload; 2. Inertia of driven gear is excessive; 3. Diameter of belt wheel is too small; 5. Belt is kinked ot incorrect operation; 6. Overlarge impact load; 7. Belt climbed to detent ring; 8. Chips or foreign materials falled into gearing. 	<ol style="list-style-type: none"> 1. Check the design and choose correct bandwidth; 2. Choose correct belt wheel; 3. Redesign the meshing number; 4. Adjust preload appropriately; 6. Prevent accidents,change design; 5. Operate storage,transportation and installation carefully; 7. Clean dirt and check the protective platens.
Excessive wear of belt edge	<ol style="list-style-type: none"> 1. Belt wheel is uneven; 2. Stiffness of bearing is not enough; 3. Detent ring is curving; 4. Surface of detent ring is rough; 5. Belt touched the protective cover or support of gearing. 	<ol style="list-style-type: none"> 1. Adjust the parallelism; 2. Increase stiffness and make sure it is really fixed; 3. Ccttect or replace detent ring; 4. Check protective platens or stand.
Excessive wear of belt teeth	<ol style="list-style-type: none"> 1. Ocerload; 2. Preload is excessive; 3. Surface of gear teeth is rough; 4. Ring radial run out of belt wheel is serious; 5. Dust or grain of sand; 6. Vibrate sharply; 7. Excessive dirt fell into gearing. 	<ol style="list-style-type: none"> 1. Check design and choose correct bandwidth; 2. Quick and appropriate preload; 3. Check and adjust the coarse of surface; 4. Check and adjust bounce of radial circular; 5. Avoid roeign materials being mixed; 6. Adjust structure or apply vibration damper; 7. Clean dirt.
Belt teeth are sheared	<ol style="list-style-type: none"> 1. Qverload or excessive impact load; 2. Tooth number of meshing is not enough (less than 6)or tooth number of belt is multiple of tooth number lf wheel; 3. Excessive preload; 4. Diameter of belt wheel is too small; 5. Ambient temperature is too high or oil and other foreign materials are interfused; 6. Stall caused by accidents and the load increases sharply. 	<ol style="list-style-type: none"> 1. Check the design; 2. Check the design and adjust the number of teeth to be odd; 3. Adjust preload; 4. Magnify the diameter lf belt wheel; 5. Change the ambient temperature and use protective cover; 6. Check the equipment and prevent accidents from occurring again.
Longitudian crack onbelts	<ol style="list-style-type: none"> 1. Belt run out from belt wheel; 2. Belt moves onto detent ring; 3. Belt cuts on the detent ring during installation. 	<ol style="list-style-type: none"> 1. Adjust the parallelism; 2. Adjust the parallelism,check the detent ting; 3. Pay attention to installation.
Belt are stretched	<ol style="list-style-type: none"> 1. The bearing is not fixed,center distance turns small when running; 2. Tensile layer of belt becomes flexible; 3. The regulateng wheel becomes flexible; 4. Belt wheel wear down; 5. Overload. 	<ol style="list-style-type: none"> 1. Pay attention to installation or change the embedding structure when design; 2. Replace the belt; 3. Check the regulating wheel and pay attention to installation; 4. Replace belt wheel; 5. Check design change the bandwidth.
Back side of belts are crack of softened	<ol style="list-style-type: none"> 1. Ambient temperature is excessive. 	<ol style="list-style-type: none"> 1. Change ambient temperature.
Operating noise is too loud	<ol style="list-style-type: none"> 1. Overload; 2. The preload is excessive; 3. The belt wheel is uneven; 4. The diameter of belt wheel is smaller than belt width; 5. Meshing of belt and belt wheel is bad. 	<ol style="list-style-type: none"> 1. Check the design; 2. Adjust the preload; 3. Adjust the parallelism and correct it during installation. 4. Check the design; 5. Check the belt and belt wheel.

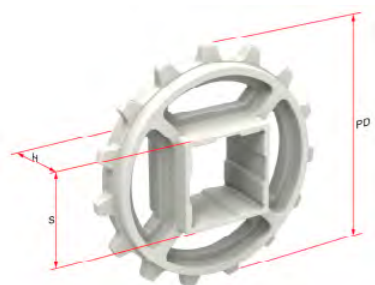


Type	HA-2600B	Pitch	25mm
Thickness	11mm	Minimum Width	185mm
Open Area	44%	Approved	FDA
Rod Diameter	4.5mm	Flight	No
Side Guard	No	Curve	No
Material	POM.PA.PE. PP.	Color	White, Gray, Nature, Dark-brown, Blue
Working Temperature	From -40 degree to 180 degree		
Sprocket Dimensions	Sprocket Size: 9T.11T.13T.15T Bore Size: square bore and round bore		
Application	Food Industry: Meat (beef & pork), Poultry, Sea Food, Bakery, Snack Food (pretzels, potato chips, tortilla chips), Fruit & vegetables Non-food Industry: Automotive, Tire manufacturing, Packaging, Printing/Paper, Postal, Corrugates cardboard, Can manufacturing, PET manufacturing and Textile		
Advantages	Floating in water, food defrosting, more than 10 times' longer life time compared with traditional conveyor belt, maintenance free feature, lower the pollution to improve quality, food approved materials available, easy to clean, big load capability, the maximum load capacity can up to 1.2tons/square meter.		

Technical Detail

Belt Material	Belt strength		Curve	Temperature		Belt Weight (Kg/M ²)
	Straight			°C (min.)	°C (max.)	
	Kg/M(BW)	N/W(BW)				
polypropylene	1100	11000	-	1	100	4.8
polyethylene	1000	10000	-	-60	60	5.1
Acetal	1580	15800	-	-40	80	9.2
Nylon	1350	13500	-	1	180	6.8

BW-Belt Width



Sprocket Dimensions			Unit:mm			
No.Teeth	PD	S	D	H	K	
6	101.5	38.5/40.5	45.5/7.5	20	7x7	
9	148.5	38.5/40.5	30.5/40.5/47.5	12	8x8	
9-2R	148.5	38.5	-	34	-	
12	196	38.5/40.5/60.5	-	12	-	

Easiest cleaned modular plastic conveyor belt for food processing

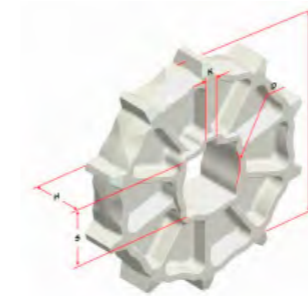


Type	HA-100	Pitch	50.8mm
Thickness	16mm	Minimum Width	150mm
Open Area	0%	Material	PP. POM. PE. PA.
Color	White, Gray, Nature, Dark-brown, Blue		
Working Temperature	From -40 degree to 180 degree		
Sprocket Dimensions	Sprocket Size: 8T.12T.16T.20T		

Technical Detail

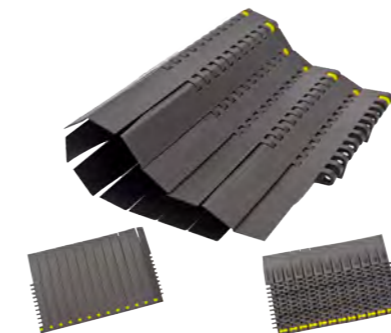
Belt Material	Belt strength		Curve	Temperature		Belt Weight (Kg/M ²)
	Straight			°C (min.)	°C (max.)	
	Kg/M(BW)	N/W(BW)				
polypropylene	1340	13400	-	1	100	9.0
polyethylene	1280	12800	-	-60	60	9.2
Acetal	1770	17700	-	-40	80	12.8
Nylon	1520	15200	-	1	180	11.3

BW-Belt Width



Sprocket Dimensions			Unit:mm			
No.Teeth	PD	S	D	H	K	
6	101.6	38.5/40.5	25.5/30.5/35.5	30	7x7	
8	133	38.5/40.5	25.5/30.5/35.5/40.5/44.5	37	7x7	
9	142	38.5/40.5	32.5/45.5/51	35	8x8	
10	164	38.5/40.5/50.5/60.5	25.5/30.5/35.5/45.5	35	8x8	
12	196	38.5/40.5/60.5	45.5/47.5	37	8x8	
16	260	38.5/40.5/63.5	-	46	-	

Flat Top Modular Plastic Conveyor Belt with Customizd Colors

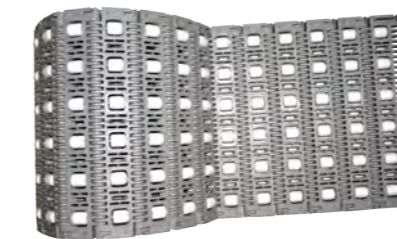
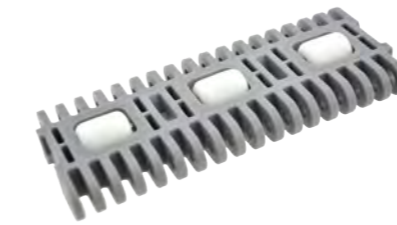
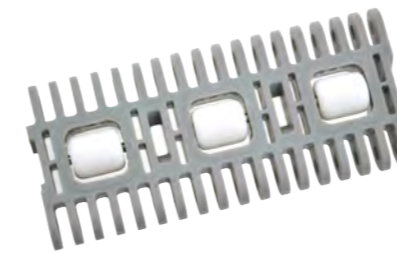


Type	HS-200A	Pitch	25.4mm
Minimum Width	150mm	Open Area	0%
Approved	EU	Rod Diameter	5mm
Flight	Yes	Side Guard	Yes
Curve	No	Material	PP.POM.PA.PE
Color	White, Gray, Nature, Dark-brown, Blue		



Design and production of:

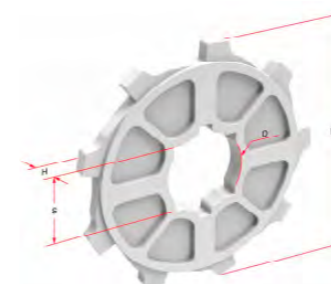
Modular transport solutions , Modular transport systems ,
Modular conveyors belt



Type	HA-3900C	Pitch	50.8mm
Thickness	20mm	Minimum Width	152mm
Open Area	18%	Approved	FDA
Rod Diameter	6mm	Flight	No
Side Guard	No	Curve	No
Material	PP,PE,POM	Color	White, Gray, Nature, Dark-brown, Blue
Working Temperature	From -40 degree to 180 degree		
Sprocket Dimensions	Sprocket Size: 6T.8T.12T.17T.8T-Split Bore Size: square bore and round bore		
Application	Food Industry: Meat (beef & pork), Poultry, Sea Food, Bakery, Snack Food (pretzels, potato chips, tortilla chips), Fruit & vegetables Non-food Industry: Automotive, Tire manufacturing, Packaging, Printing/Paper, Postal, Corrugates cardboard, Can manufacturing, PET manufacturing and Textile		
Advantages	Floating in water, food defrosting, more than 10 times' longer life time compared with traditional conveyor belt, maintenance free feature, lower the pollution to improve quality, food approved materials available, easy to clean, big load capability, the maximum load capacity can up to 1.2tons/square meter.		

Technical Detail

Belt Material	Belt strength		Curve	Temperature		Belt Weight (Kg/M ²)
	Straight			°C (min.)	°C (max.)	
	Kg/M(BW)	NW(BW)				
polypropylene	2745	27450	-	1	100	6.6
polyethylene	2610	26100	-	-60	60	7.4
Acetal	3090	30900	-	-40	80	9.5
Nylon	2400	24000	-	1	180	8.5



Sprocket Dimensions			Unit: mm		
No.Teeth	PD	S	D	H	K
6	101.5	38.5/40.5	45.5/7.5	20	7x7
9	148.5	38.5/40.5	30.5/40.5/47.5	12	8x8
9-2R	148.5	38.5	-	34	-
12	196	38.5/40.5/60.5	-	12	-